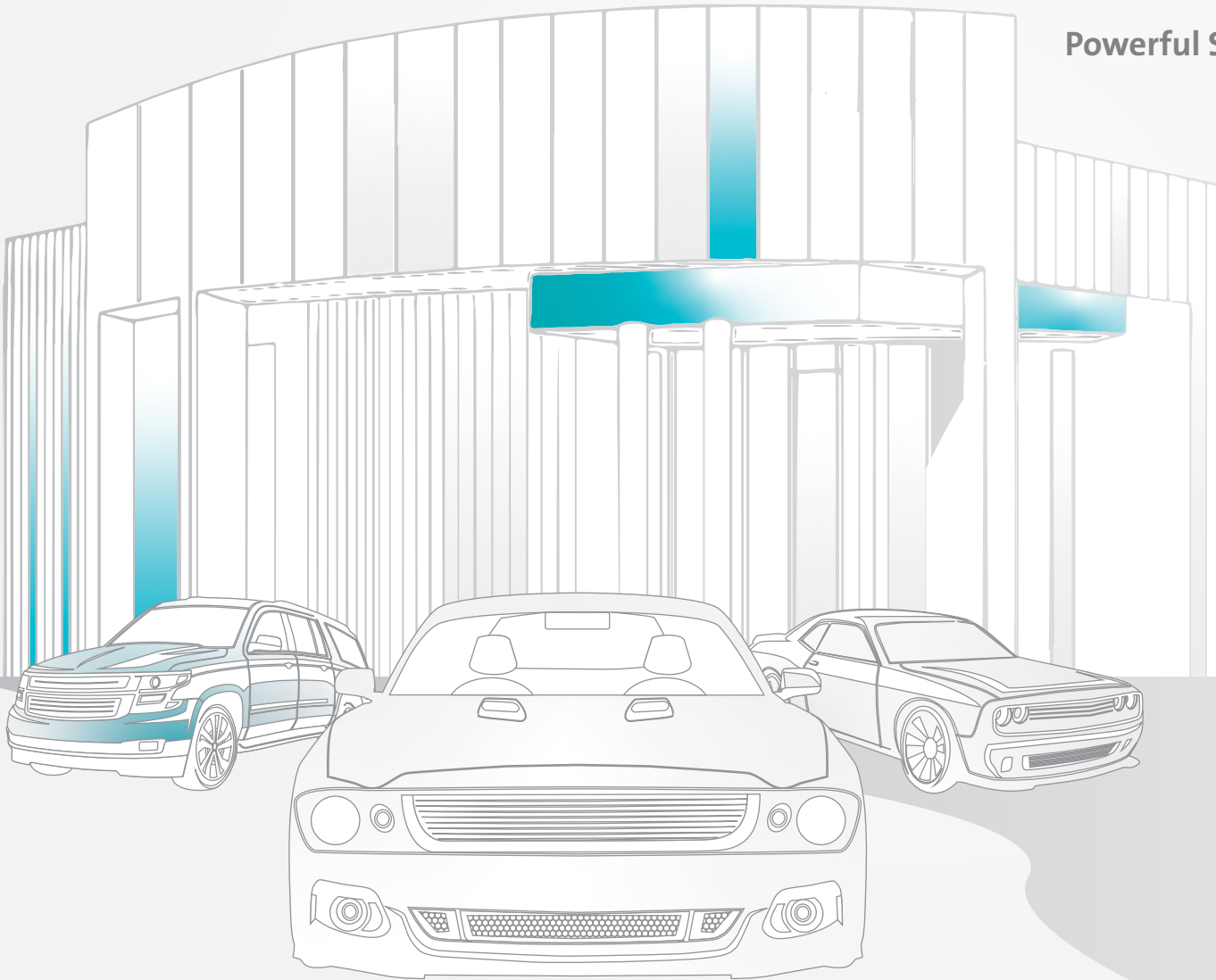




Automotive Dealer Management System

Powerful Solution for Retail Automotive





www.natejsoft.com





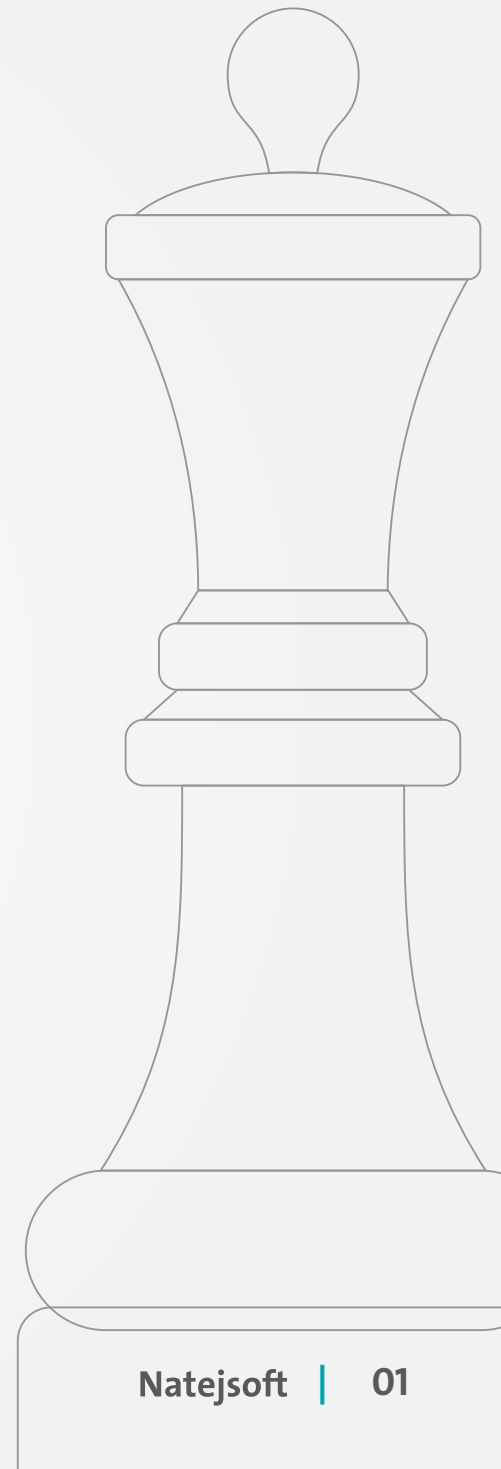
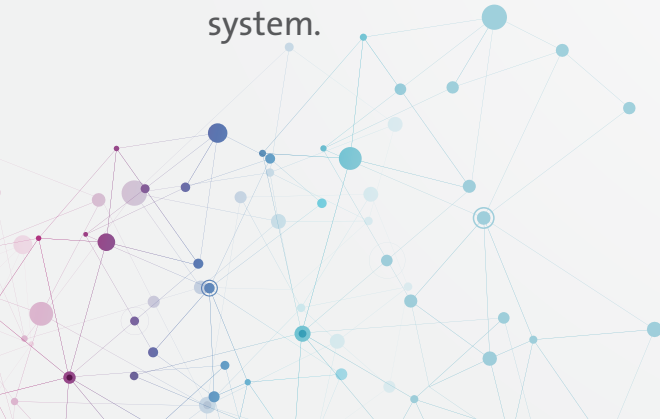
About Natejssoft

Natejssoft has developed and implemented complex business solutions in the most simplified way possible for customers. We come in as consultants; we understand the needs of your business and help you in finding out a solution that helps you maximize revenues / minimize costs. Our experienced and skilled team of project managers, programmers and quality experts then helps you in technical implementation of the same in cost effective and timely manner.

Natejssoft having own solutions in the Automotive DMS and automotive retail management business, is one of the most preferred company and having long years of experience in the industry.

The experience of the company comes from implementing site automotive DMS of a lot of dealers, CRM, RFID solution, Sales, Spare parts, Aftersales and more related products and solutions in retail automotive business.

Besides this vast experience, educational back ground of employees are fulfilled by professional experience in downstream, software and automotive businesses. And the biggest advantage in our solutions is their full integration with all modules and our ERP system.





Mission

Natejsoft mission is to develop and provide the most advanced, integrated software solutions and services to its clients in the most easily implemented way. Working with a range of ERPs, Natejsoft software is designed to coordinate its clients a complete set of resources, information and activities within one holistic system, contributing substantially to their productivity, efficiency and profitability. And make automotive DMS business easier, safer, and more efficient.



Vision

Our vision is to lead innovation in our field and we realize that our success is a reciprocal process. The more connected Natejsoft is with its clients and the more responsive we are the greater success we can garner and the faster progress we can attain. And to be the leader of automotive DMS solutions supplier in our region.





Why Natejsoft

Natejsoft was founded in 1999. Natejsoft provides end-to-end solutions for the automotive retail market and is one of the global market leader in this area with products and systems marketed in international .

Natejsoft is ready to study, analyze and develop custom solutions for your business needs. Our experts armed with the tools and years' experience has proven itself time after time that we can tailor fit your business needs with any business software that cannot be “picked off the shelf” quickly and affordably!

Natejsoft providing the fully integrated software for automotive DMS business In addition to the equipment required for operation, and also has a complete the know-how of fuel business and unique of integration between automotive DMS system and Natej ERP system.





Identity

1



CLOUD

Make sure your data travels with you as well Any where , Any Time.

2



SECURE

Maximum security for payments and strong customer support.

3



BORDERLESS

Borderless and can be installed and used in every corner of the world.

4



INTEGRABLE

Great flexibility with multiple choices and can easily be integrated with your existing solutions.



5

INNOVATIVE

Excellent choice for businesses looking for a competitive edge. For retailers, this offers effective and flexible solution to stay competitive in the fast-paced retail landscape and to attract new clients through innovation.

6

LESS THAN HARDWARE

No need more hardware with our intelligent and smart solution.

7

COST-EFFICIENT

Minimizes expensive on-site service cost, lowers regular software maintenance fee and gets you out of the expensive vendor lock-in with end devices. In other words, you will have a system that is cheaper to run and maintain.

8

PERSONALIZABLE

Designed to can be tailored and customized to your company's specific needs and requirements. You can also define custom dashboard and sidebar for each page to suit your specific needs.



Identity





Holistic Solutions

All automotive business, one box





SOFTWARE PRODUCT RANGE

Fully integrated





Campaigns Management



Free Zone Sales



CRM



Survey Management



Show Room Sales



Spare Parts



Sales Smart Application



Customer Self Service



Aftersales



Technician Smart Application



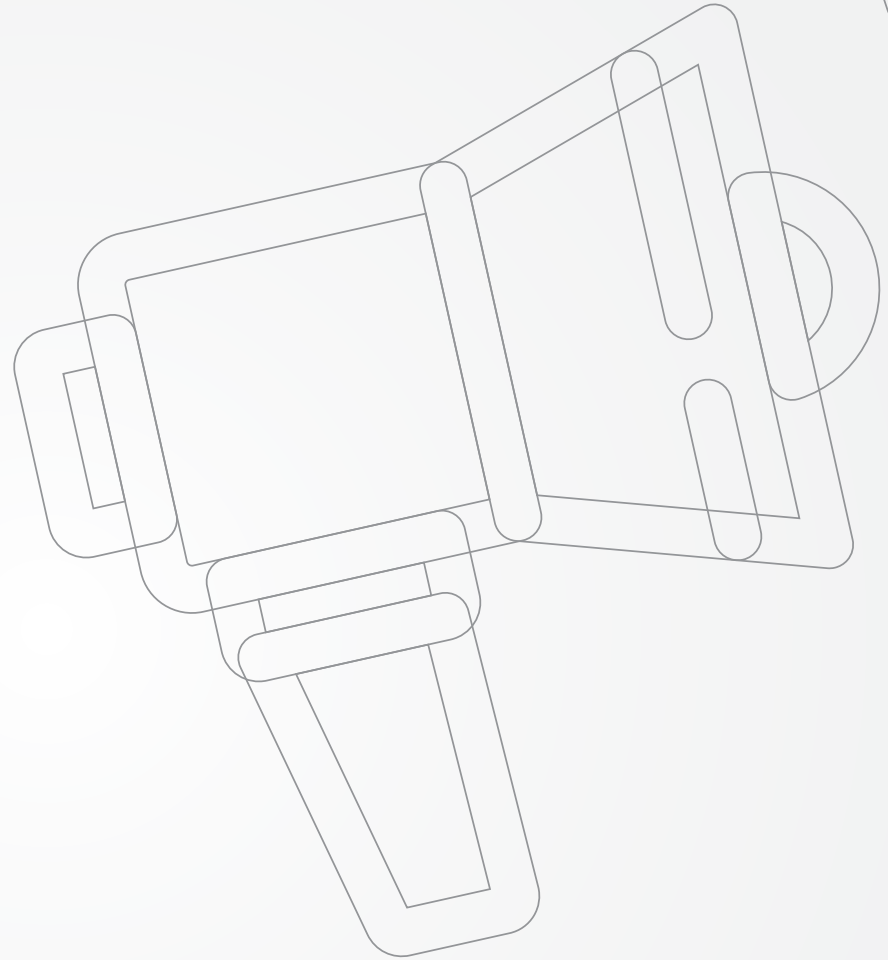
ERP System

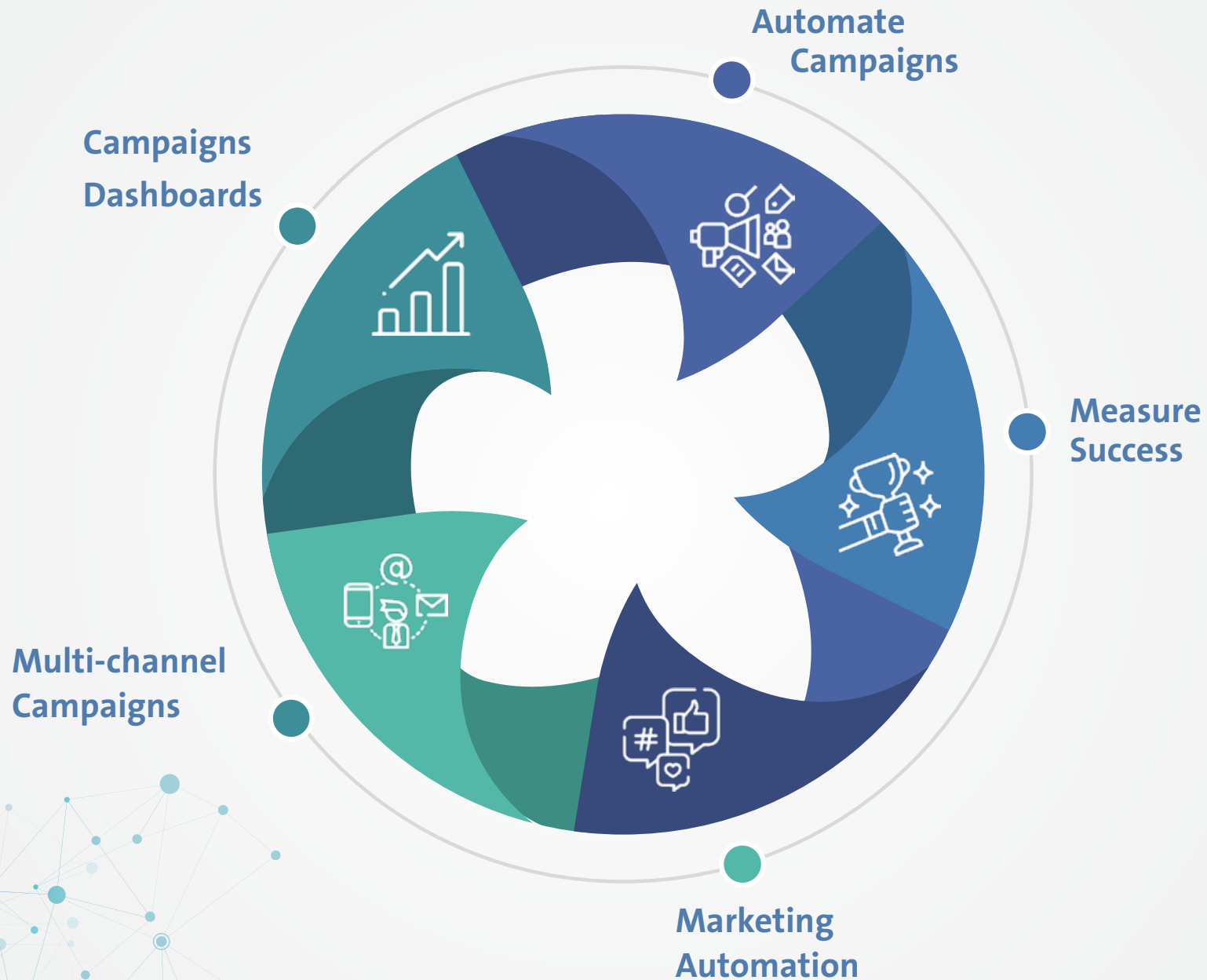


KPIs



Marketing







Customer Relationship Management (CRM)

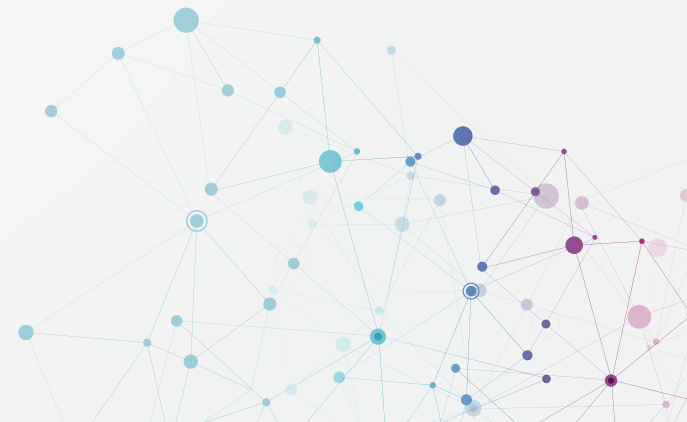
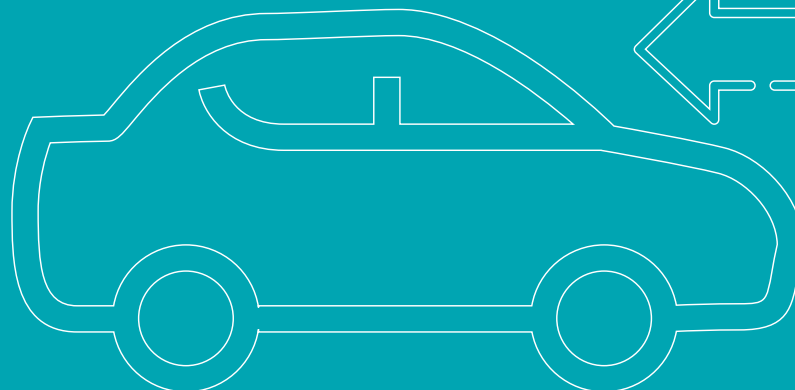
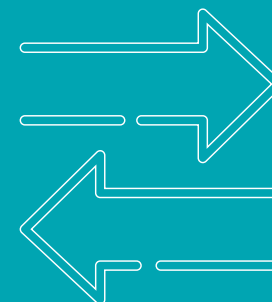
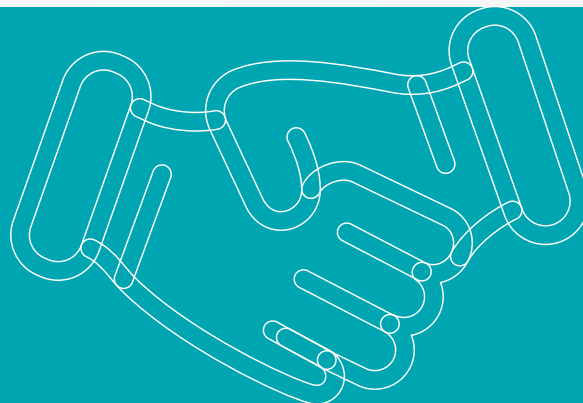
Made it Easy







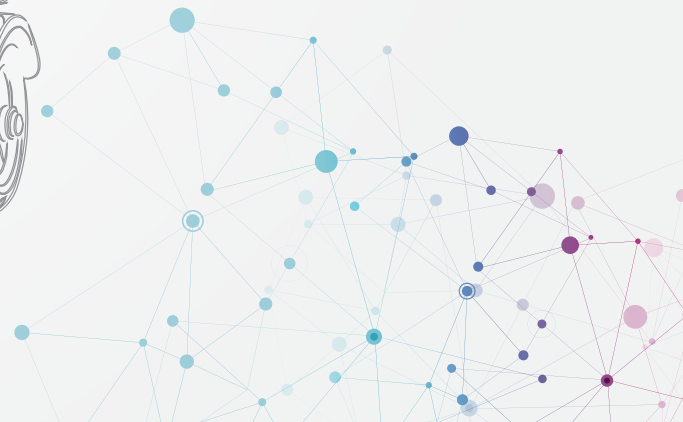
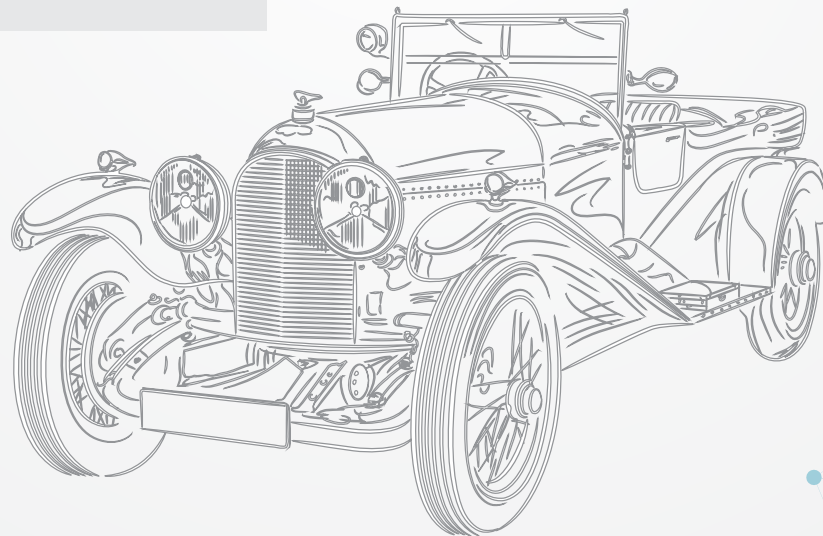
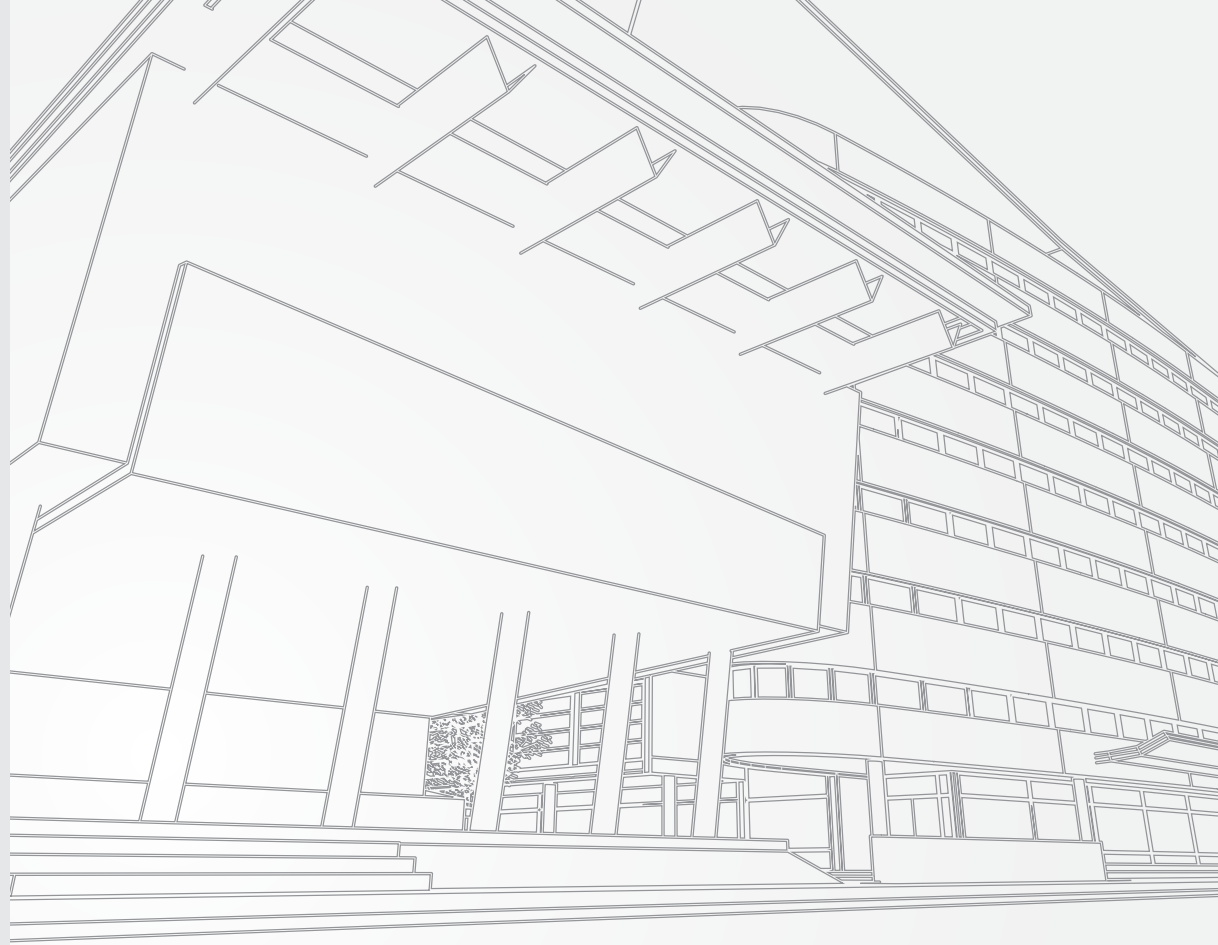
Sales







SHOWROOM

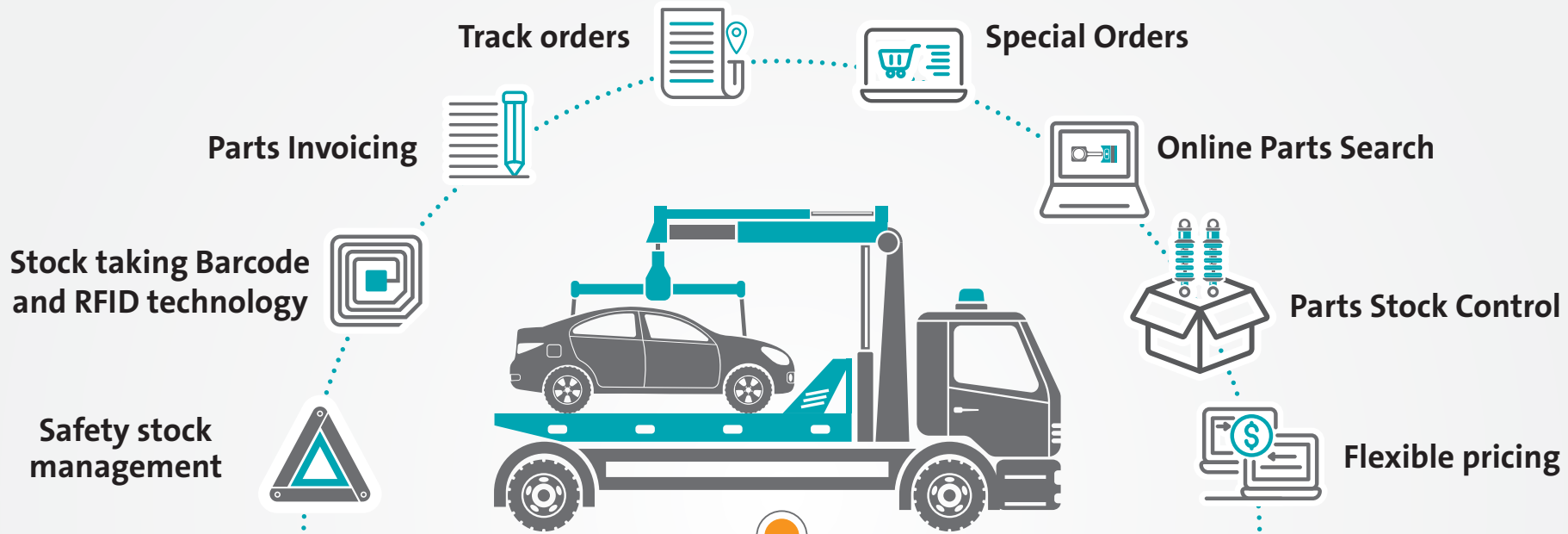






● Spare Parts

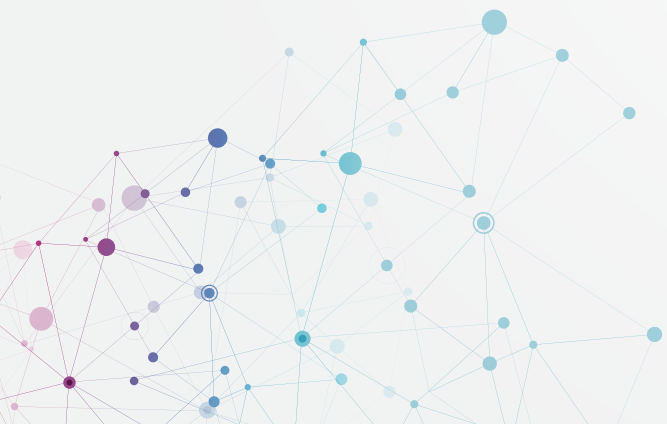




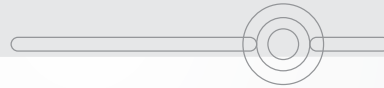
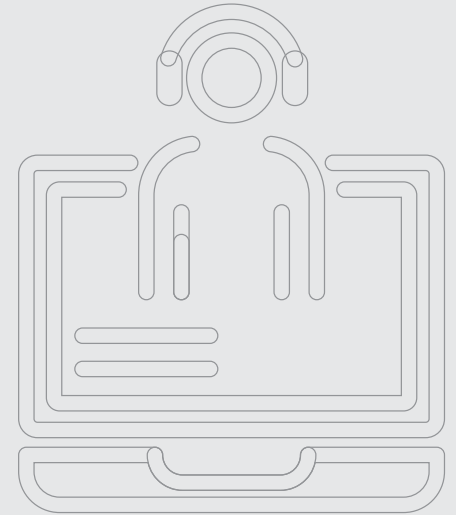
Smart warehouse cycle mobile application



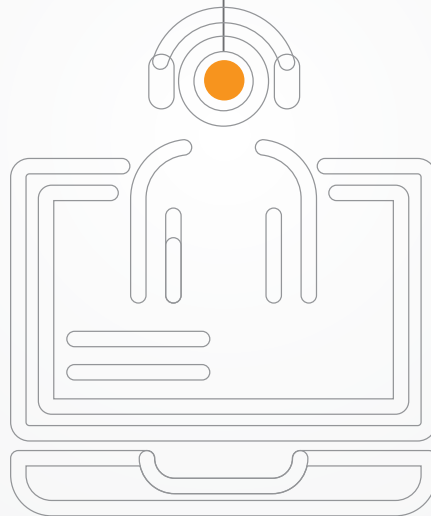
Minimum order variables



Service



- Online Service
- Real-time Scheduling Tools
- DMS Integration
- Service Package Management
- Service Contract Template
- Split Job Orders
- Mobile Service Advisor
- Mobile Service Technician
- Comprehensive Clocking
- Workshop Kpis



- Technician Efficiency
- Technician Productivity
- Technician Utilization
- Recall Campaign Management
- Customer Service History
- Periodic Maintenance
- Vehicle Inspections
- Service Survey Generator
- Service Pricing Guide
- Multi-point Check List Inspections



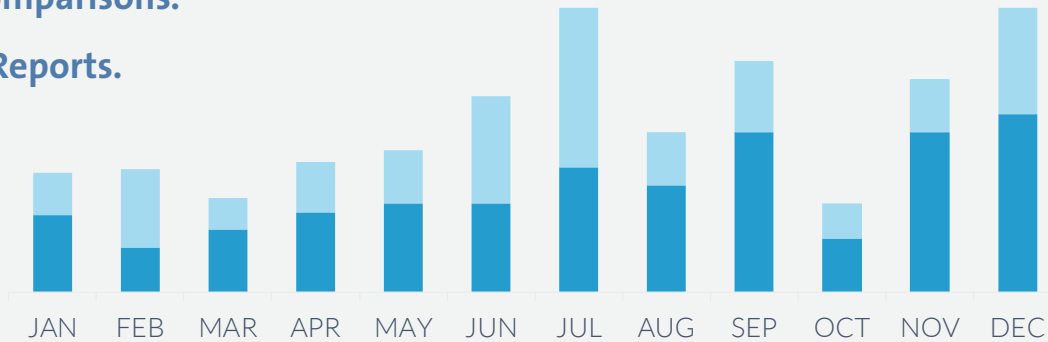
● Reports and Dashboards





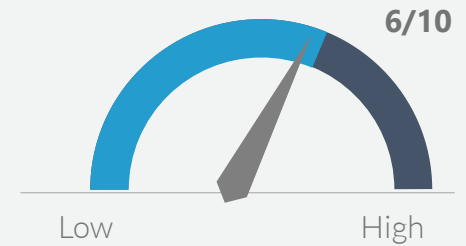
Sales Analysis

- Live Sales Transactions.
- Sales Comparisons.
- + 30 of Reports.

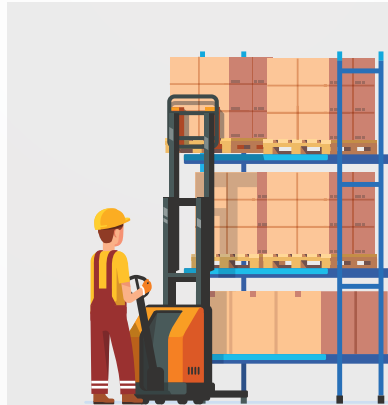
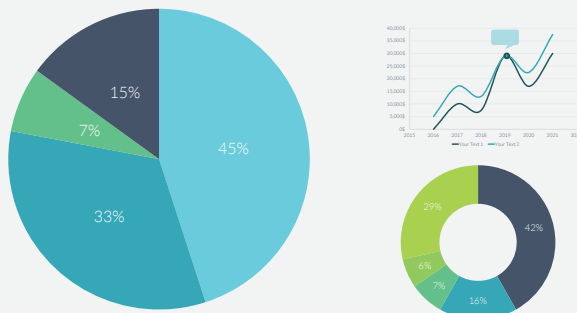


Reports for:

Customers, Suppliers,
Fleets, Vehicles and
Labors.



Customized Reports



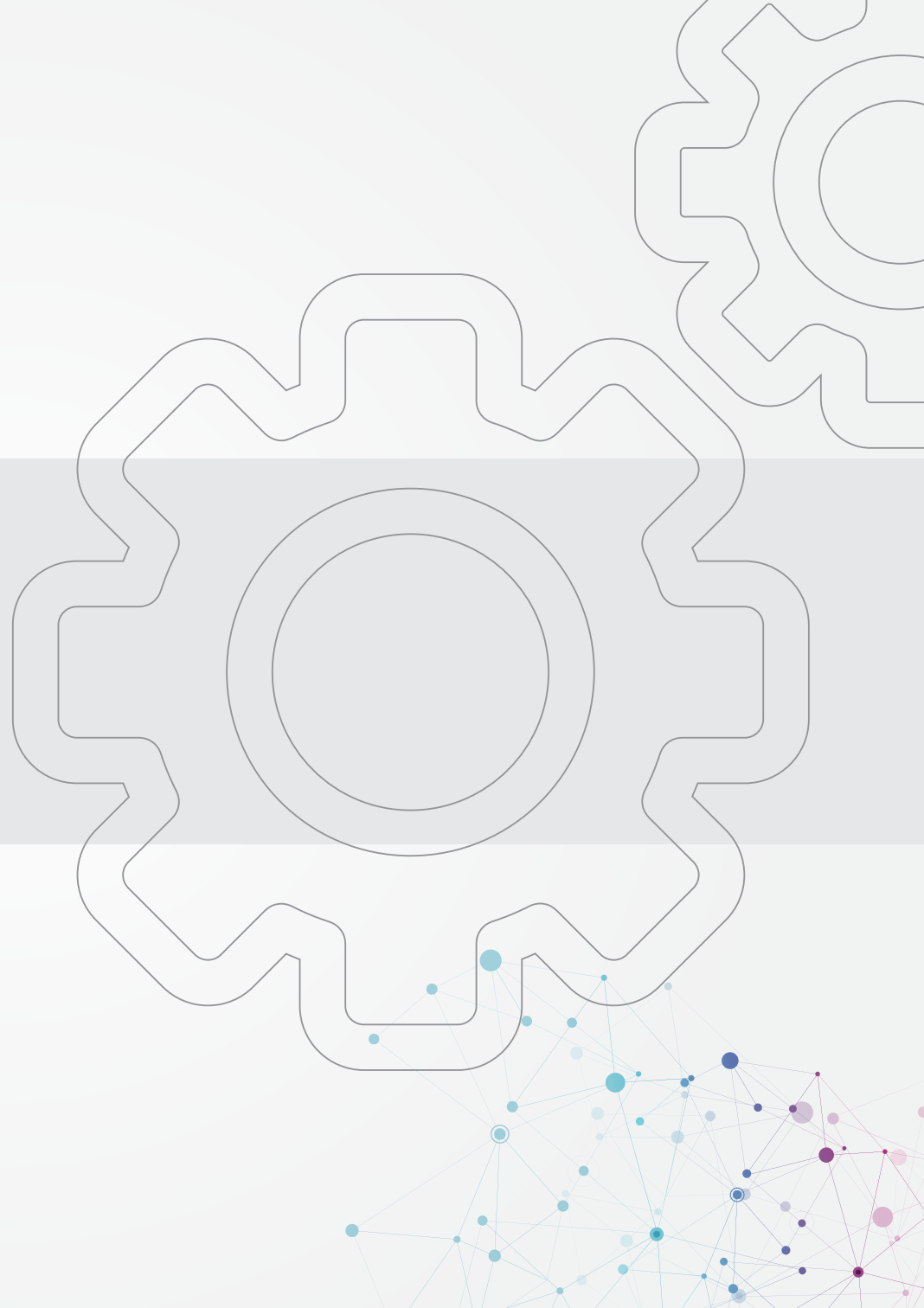
Stock Monitoring

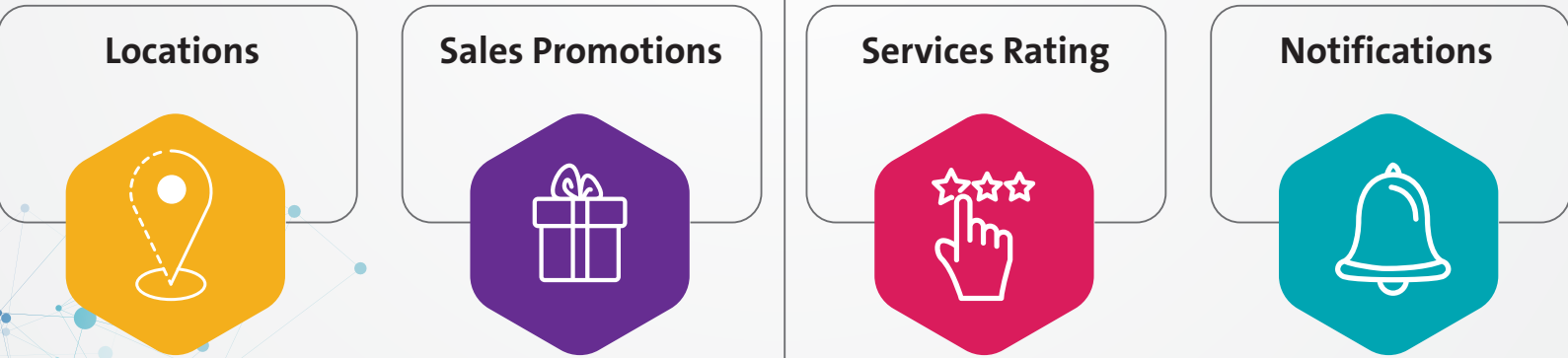
- On hand, on transit .
- Minimum orders.. etc.
- Physical in Hand and stock loss & Gain report.
- 50+ of Reports.



CUSTOMERS SELF SERVICE

Mobile Application and Web Portal







OUR CLIENTS

<http://www.natejssoft.com/clients/>





WHERE WE ARE?

<http://www.natejssoft.com/contact/>





Thank You